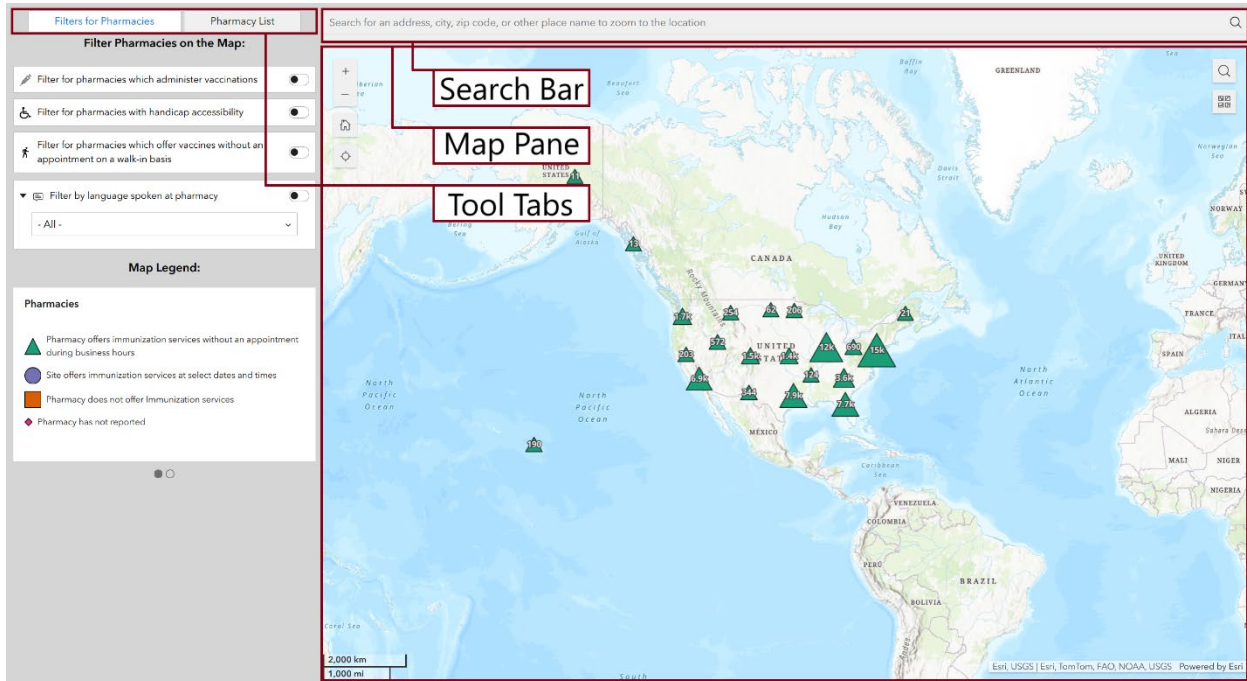


Using the Public Pharmacy Vaccine Access Map Tool



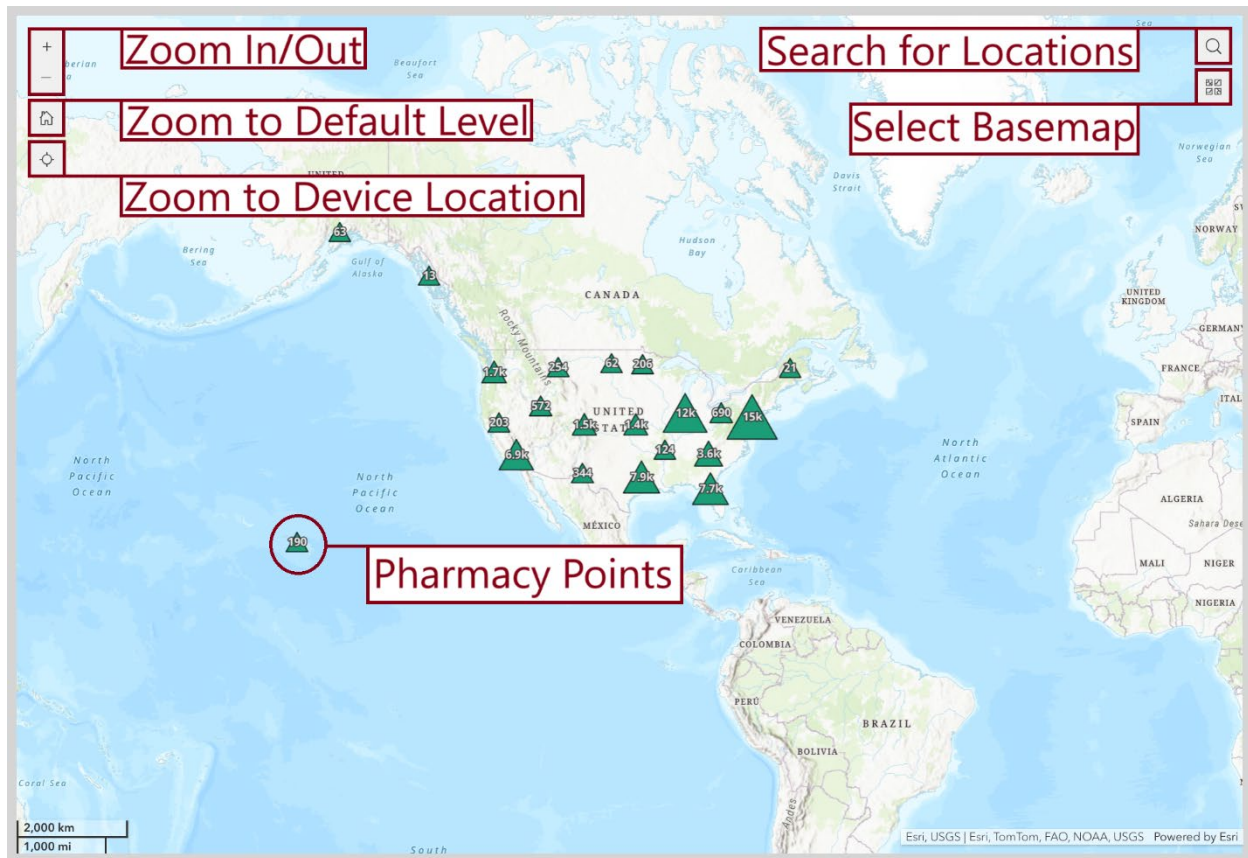
The three basic areas of the public vaccine access map tool: search bar, map pane, and tool tabs.

Search Bar:



The search bar is the quickest method to zoom into a particular location. To use this feature, type in an address, city/town, zip code, or any other location name. Press the “enter” key or select a result from the search bar. The map will then zoom and pan to the entered location.

Map Pane:



The map pane is the primary viewing area of the mapping tool. The point locations for pharmacies will be visualized here.

Buttons for zooming in/out, zooming to the default level, and zooming to the device location can be found in the top left. Buttons for the base map selection and simple location searching can be found in the top right.

Zooming and panning can also be performed using a mouse or with touch features (on mobile/tablet) as it is done in Google Maps or other apps.

Pharmacy points can be selected by clicking on them. A pop-up box will display the information of the point. While zoomed out, points are grouped together into clusters. By zooming in or selecting a cluster, the clusters can be broken into individual pharmacies.

Tool Tab—Filters for Pharmacies:

The pharmacy filters tab allows users to filter the pharmacy points on the map pane and pharmacies list to those which have the results they would like. Filters for “Pharmacies which administer vaccinations,” “Pharmacies with Handicap Accessibility,” “Pharmacies which offer vaccinations without an appointment on a walk-in basis,” and “By Language Spoken at Pharmacy” are toggled by clicking on the on/off button. The languages in the filter “by language spoken at pharmacy” are dependent on the pharmacies visible in the map pane. If a wanted language is not visible, zoom out to the default level and then select the language.

The legend displays an explanation of the visualization for the layers in the current map pane. Scroll to additional legend pages by left-clicking on the dots at the bottom of the legend.

Tool Tab—Pharmacy List:

The screenshot shows the 'Pharmacy List' tool tab interface. At the top, there are two tabs: 'Filters for Pharmacies' and 'Pharmacy List'. Below the tabs, the text 'List of pharmacies on the map:' is displayed. A list of pharmacies is shown, with the first entry 'COSTCO PHARMACY #63' highlighted. A red box labeled 'Pharmacies on the Map Pane' is overlaid on the list. Below the list, there is a pagination control showing '1', '2', '...', and '6063'. A red box labeled 'Pharmacy List Pages' is overlaid on the pagination control. At the bottom, there is a 'Map Legend' section with the title 'Pharmacies' and four entries: 'Pharmacy offers immunization services without an appointment during business hours' (green triangle), 'Site offers immunization services at select dates and times' (blue circle), 'Pharmacy does not offer Immunization services' (orange square), and 'Pharmacy has not reported' (purple diamond). At the very bottom, there are two small circles, one filled and one empty.

The pharmacies list tab is a display of all pharmacies currently visible in the map pane. By selecting a pharmacy, the map pane will zoom to the pharmacy. If there is more than one page of pharmacies, then the additional pharmacies can be displayed by left-clicking on the page numbers at the bottom of the tab.

The legend displays an explanation of the visualization for the layers in the current map pane. Scroll to additional legend pages by left-clicking on the dots at the bottom of the legend.